



The leaders in veterinary CT & MRI





“The specialists in our field”

Burgess Diagnostics are uniquely positioned to provide the UK's only dedicated mobile veterinary MRI and CT service.

With many years' experience in developing cross-sectional imaging services, the team, consisting of highly skilled radiographers, engineers and veterinary surgeons, have a wealth of expertise and experience in all aspects of MRI and CT scanning.

“Intelligence through experience”



Using a range of business models, Mike has over thirty years' experience in providing quality diagnostic services in both the human healthcare and veterinary sectors.

As a qualified radiographer and specialist in cross-sectional imaging, his experience and management skills have enabled him to lead the Burgess Diagnostics team and establish them as the UK's leading providers of mobile imaging services.

By offering this invaluable diagnostic tool of cross-sectional imaging to the veterinary profession through this unique scanning service, Mike and his team has enabled veterinary surgeons to offer their clients the kind of technological advancements previously reserved for human medicine.

Magnetic Resonance Imaging

"Technology for the future"



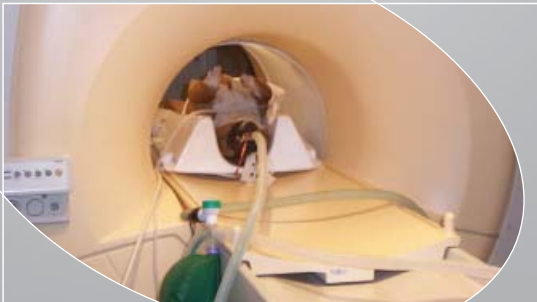
Magnetic Resonance Imaging or MRI is an imaging process, which has established itself as the dominant diagnostic investigation process in human medicine. It is unparalleled in the investigation of soft tissues due to its superior contrast sensitivity and tissue discrimination.

This, combined with imaging in any plane and without the associated x-radiation, makes MRI the optimum method of investigation in the majority of clinical cases.

This invaluable diagnostic tool is now available to the veterinary profession.

For accurate diagnosis and lesion localisation, MRI is now the investigation of choice in all neurological, joint and spinal disease processes. With multi-planar capabilities, various MRI sequences and the latest contrast agents, tissue and disease characterisation will allow accurate identification and case treatment/management.

New software developments and technological advancements are continuously being developed and made available to the veterinary profession through the expertise and commitment of the Burgess Diagnostics team.



MRI in practice

Images in multiple planes

Images of the highest quality and clarity

Totally non-invasive: no use of radiation

Safe, affordable and readily accessible

Superb diagnostic tool with wide range of applications:

CNS

Spine

Joints

Soft tissue

The equipment

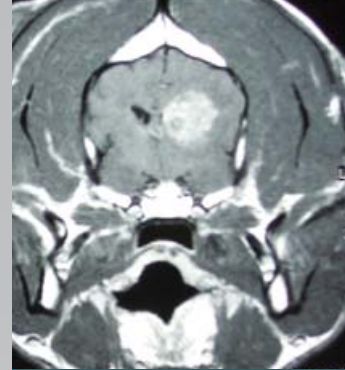
State-of-the-art, high field strength
Philips Medical Systems

Housed in the self-contained medical trailer

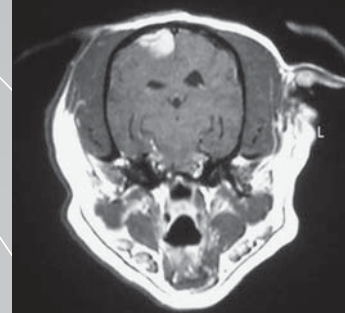
Integrated anaesthetic system

Workstation with network, dicom output
and CD writing capabilities

Laser hard copy film facility



Malignant Glioma:
T1-Post Contrast



Para-Falcine Meningioma:
T1-Post Contrast



Axial Slice through Lumbar-Sacral Joint:
Mild Compression of Right Nerve Root



Proton Density Sagittal Slice:
Showing torn meniscus

Computed Tomography



Computed Tomography or CT is a clinical imaging procedure which uses X-rays to produce a cross-sectional, or 'slice' image of the inside of the body. The process can show bones, as well as surrounding soft tissues such as muscle and blood vessels with great clarity.

CT imaging produces a volume of data which can be manipulated electronically to allow reformatting in multiple planes.

Our CT systems are able to scan large areas of the body in one continuous operation and can deliver large numbers of images to aid in the diagnosis of many conditions, including neoplasm, cardiovascular disease, infectious disease, trauma and musculoskeletal disorders.



CT in practice

Images in multiple planes

Images of the highest quality and clarity

Safe, affordable and readily accessible

Superb diagnostic tool with wide range of applications:

Thorax

Joints

Osseus disease

Angiography

The equipment

GE lightspeed 16-slice CT scanners

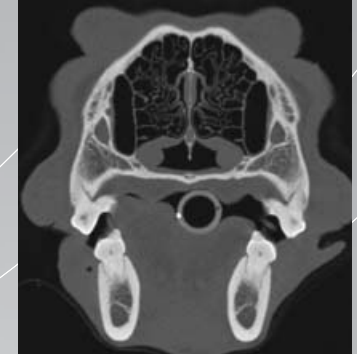
Integrated anaesthetic system

Workstation with network, dicom output and CD writing capabilities

Laser hard copy film facility



Abdominal angiogram



Normal Anatomy



Normal Anatomy



Lung mass

UK Coverage

With six of the most advanced MRI and CT systems in the world, Burgess Diagnostics operates on a national level and aims to service your MRI and CT requirements at your convenience.

You may wish to only refer an occasional case for a scan, in which case we have established over 46 partnership sites within the Burgess scanning network across the UK.

If you are thinking about joining our scanning network as a partnership site, and developing a scanning centre, then please contact us directly on 0845 371 4012 and we can discuss your needs and our requirements further.



Contact Burgess Diagnostics

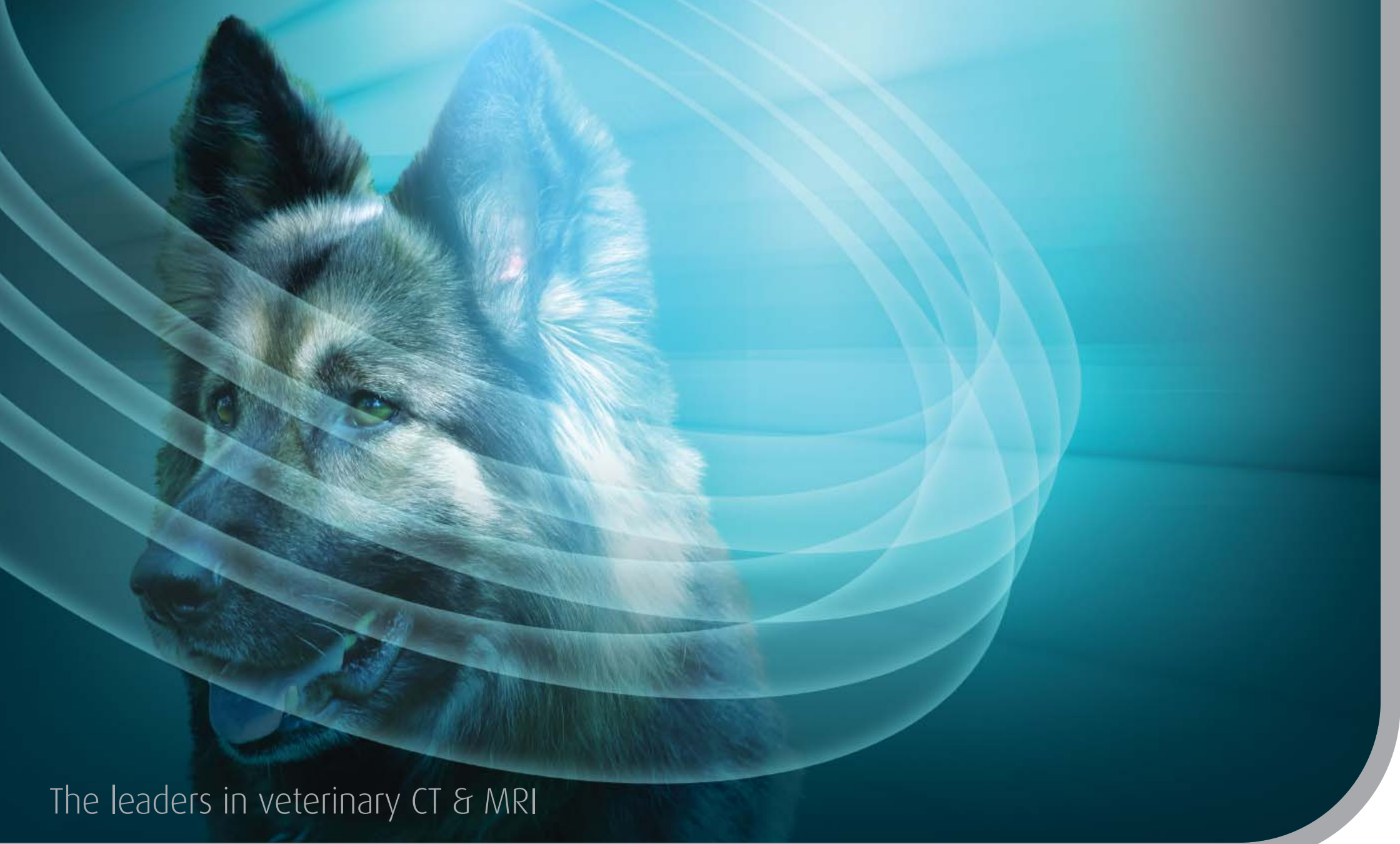
For further information about our service, please telephone Mike Hadfield on **07824 638394** or email **mike.hadfield@burgessdiagnostics.com**. Alternatively, please log on to our website at **www.burgessdiagnostics.com**

The Burgess Service

"Cost-effective, flexible technology"

Our service now provides the veterinary profession with the only dedicated and cost-effective MRI and CT scanning service, tailored to each practice and veterinary surgeon's particular requirements.

With no capital costs and short lead-in time, scanning centres can be mobilised within a matter of weeks. This unique, highly focused technology and dedicated service will enable veterinary surgeons to further enhance their clinical practice.



The leaders in veterinary CT & MRI



Burgess Diagnostics Ltd, Earnshaw Business Centre, Hugh Lane, Preston, PR26 6PD
Tel: 0845 3714012 Email: mike.hadfield@burgessdiagnostics.com www.burgessdiagnostics.com
Company Registration No. 4830307