



Mobile Scanner Planning Guide

MRI/CT Mobile Units



Contents

Our Mobile Fleet	3
Area Requirements	4
Vehicle Access Requirements	5
Power Requirements	6
Contact Us	7

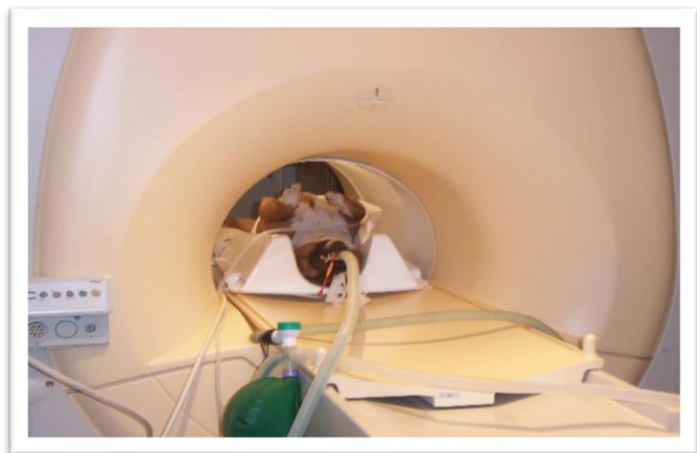
Our Mobile Fleet

Burgess Diagnostics provides both mobile MRI and CT scanner services exclusively to the veterinary profession. Having a fleet of mobile scanners; this enables practices to have diagnostics delivered directly to the door in a convenient, cost effective, flexible arrangement.

All scanners are contained in trailer mounted units and are spacious enough to allow staff plenty of room to work in and pets enough space to feel at ease.

Burgess Diagnostics' fleet currently comprises:

- MRI – Phillips High Field Strength Systems
- CT – GE Light Speed 16 slice System



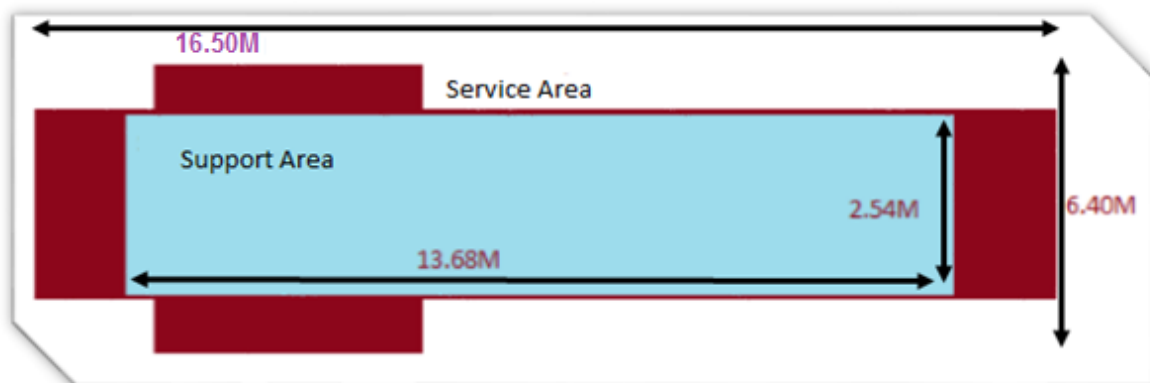
Area Requirements

A suitable area is required to support the unit. Our Logistics Manager will visit the site prior to any service commencement to assess access, egress and the area in which the unit will be sited.

Below are ideal measurements for both the support area and the service area.

Support Area – This area will hold the main weight of the unit. A full pad area measuring 2.54m wide x 13.68m long must be available.

Service Area – An area of 6.40m wide x 16.50m long is recommended to provide full service access to the unit. Please note that the side pull outs to the unit will vary. The side expansions on the trailer will vary from 0.5 m to 1m wide.



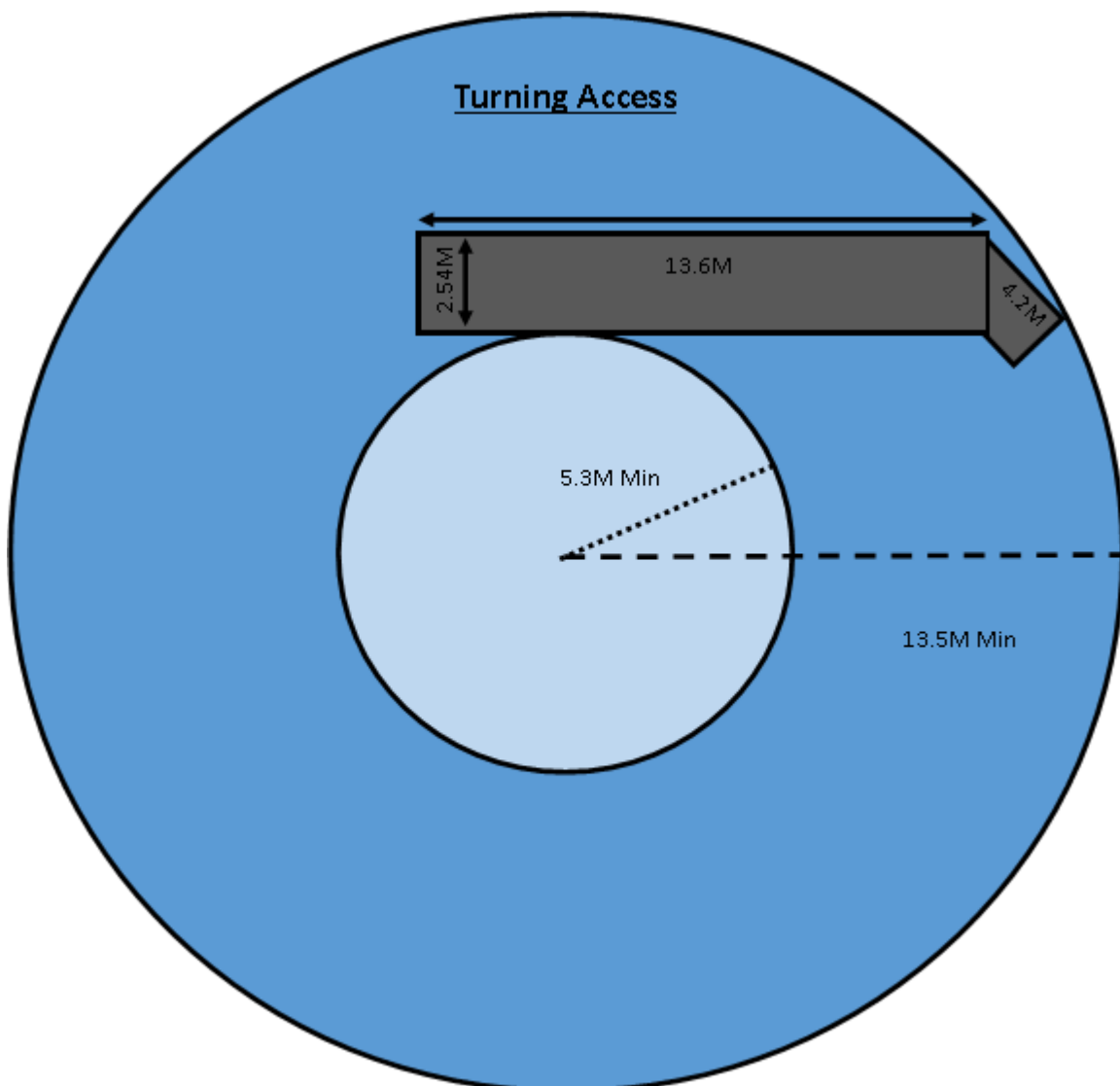
If you have any queries regarding the requirements, please contact enquiries@burgessdiagnostics.com

Vehicle Access Requirements

All of our mobile units will require enough space to turn around in to position the scanner. The surrounding area will need to be of sound surface (areas that have items such as grid covers will be checked by our Logistics Manager to ensure they are able to hold the weight requirement and these will need to be of highways standards) to provide good access to the trailer.

It will always be the responsibility of the site to ensure the area in which the scanner is to be sited is clear for access and positioning.

The turning specification is outlined below.



Power Requirements

All of our scanners will require a power source. The most effective way to connect is to have a power box installed on the site where scanning will take place. Our Logistics Manager will be able to provide you with requirements and estimated costs. When the site visit takes place this will be one of the elements that is evaluated should you think you already have the correct power source available.

The power box needs to contain 3-phase 5-wire, wye connection with neutral and ground (5 wire 3/N/PE AC 400V). The frequency is 50 Hz +/- 1Hz. Our scanners will have on board a 15m, 70mm power cable with a male connector. The power box on site must contain a 250 amp Marechal female connector e.g. IDE Systems below.



Should a permanent power supply not be an option or available, some of our scanners are fitted with on-board generators. If this option is chosen a generator charge will be applied per hour.



Contact Us

If you require any further information or you would like to discuss our services in more detail, including the clinical service delivery please contact us on the details below.

Burgess Diagnostics Ltd.
Oak House
317 Golden Hill Lane
Leyland
Preston
Lancashire
PR25 2YJ
Tel: 0845 371 4012
enquiries@burgessdiagnostics.com

